



Jan 25, 2022

Indian Market	Change (%)		
	Last Close	1 day	YTD
Sensex	57,492	(2.6)	(2.9)
Nifty	17,149	(2.7)	(2.7)
Nifty Bank	36,948	(1.7)	1.4
Nifty Midcap 50	8,105	(3.9)	(4.9)
Nifty Smallcap 50	5,028	(4.8)	(7.1)

Developed Markets	Change(%)		
	Last Close	1 day	YTD
Dow Jones	34,365	0.3	(6.1)
Nasdaq	13,855	0.6	(12.5)
S&P 500	4,410	0.3	(8.1)
Hang Seng	24,656	(1.2)	5.9
Nikkei	27,588	0.2	(4.2)

Institutional Activity	(` cr)	
	Cash	YTD
FII	-3752	-19315
DII	75	7505

*Provisional Figures

Advance/Decline stocks No. (NSE)		
	24-Jan-22	21-Jan-22
Adv	187	463
Dec	2014	1680
Unch	38	40

Trading Strategy

Short Term: Buy ABB @2410-2390, SL 2360 & Target 2500. The stock has given a short term breakout.

Trading ideas (Time period: 1-2 days)

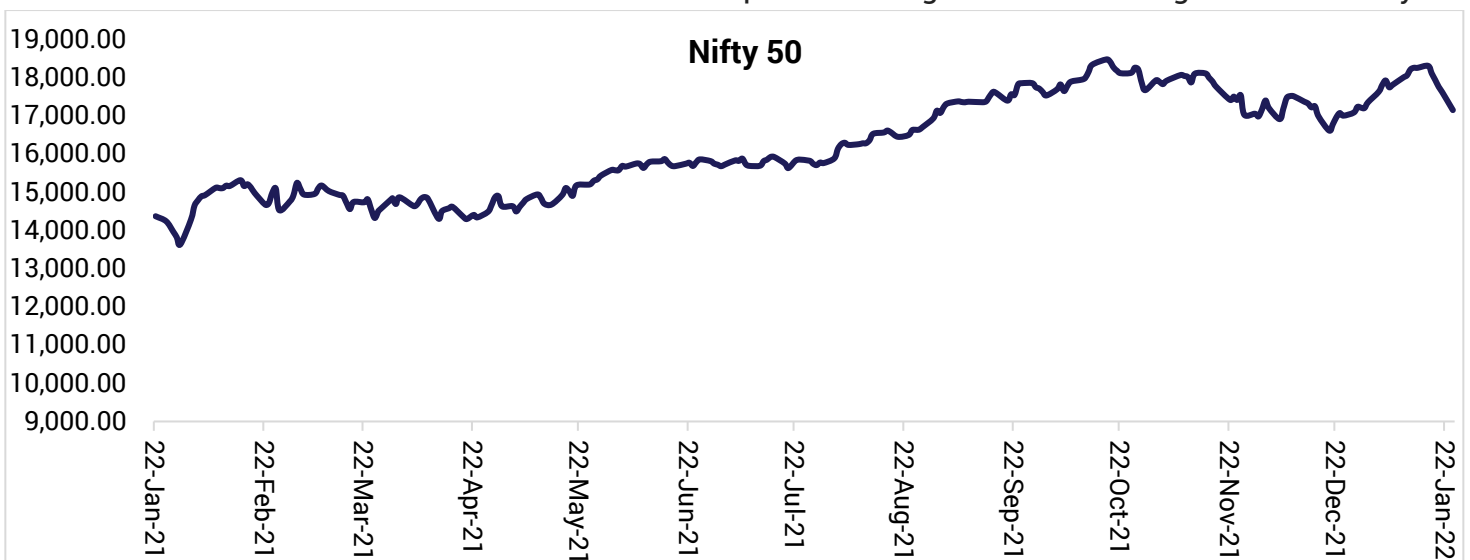
Buy SBI January future @490-494, Stop loss 482.15 & Target 502.

Derivative Strategy (Time Period: Hold till expiry)

Buy AXIS BANK January future @ 701-706, Stop loss 689.45 & Target 718.

Technical View: Nifty finds support around 16800 while 17500 will act as resistance. Bank Nifty finds support around 36200 while 37600 will act as resistance on the upside.

Asian markets opened weak as the Japanese 'Nikkei' traded lower by over 500 points in early trade as it had closed in the green yesterday & with US futures trading lower there was selling pressure in early trade. The same was witnessed in other Asian markets as the Taiwan markets prepare for the Lunar holidays from 27th January to 7th February. Chinese stocks had a good day yesterday & may also see profit booking ahead of the long week of holidays.





Index	Spot	Future	FutChg (%)	Basis	Current OI v/s Total OI (%)	OI in Shares	OI Chg	PCR OI	PCR VOL	ATM IV	Max CE Buildup	Max PE Buildup	Rollovers (%)
Nifty	17149	17152	(2.6)	3	74.3	127.0	13.6	0.67	0.93	24.9	18000	16500	40.4
BankNifty	36948	36967	(1.7)	19	88.8	22.6	7.4	0.54	1.09	29.7	38000	36000	37.4

OI Gainers

Underline	OI (lakhs)	OI Chg (%)	Price	Price Chg (%)	Action
ONGC	764	15.7	165	0.8	Long Buildup
NTPC	616	15.5	133	(0.9)	Short Buildup
CUMMINSIND	17	15.1	898	(2.5)	Short Buildup

OI Losers

Underline	OI (lakhs)	OI Chg (%)	Price	Price Chg (%)	Action
BANDHANBNK	232	(21.7)	308	4.0	Short Covering
ASHOKLEY	281	(12.2)	133	(4.2)	Long Unwinding
BANKBARODA	1239	(12.1)	92	(0.4)	Long Unwinding

Nifty Monthly Active Strikes

Strikes	Price	Price Chng (%)	OI	OI Chng (%)	% OI Change since Expiry
17400CE	59.8	(78.8)	42	852.0	1022.4
17300CE	92	(74.7)	28	869.6	269.2
17200CE	135	(70.4)	25.3	502.7	169.5
16700PE	35	437.4	18.4	52.1	150.3
16600PE	24	414.7	16	91.5	188.4

Since Expiry

Underline	OI	OI Chg (%)	Price Chg (%)	Rollover (%)
NIFTY	127.0	22.0	(0.3)	40.4
BANKNIFTY	22.6	(5.7)	5.4	37.4
ONGC	763.6	137.3	17.2	32.0
ABBOTINDIA	0.7	136.9	(15.8)	59.7

Derivative Snippets

Nifty/Bank Nifty Weekly expiry update:

- On the options front (January, 2022 expiry) In Nifty, Addition in Put writing is seen at 17000PE levels indicating support for the Nifty and Call writing is observed across the levels.
- Nifty PCR stood at 0.67X vs 0.87X
- FII's index future long short ratio stood at 0.8x vs 1.0x
- FIIs were net sellers in the cash market segment to the tune of Rs -3,751.58 cr.

FII Long-Short Activity

Index	OI	% Chg	% Chg Since Exp	Long-Short Ratio	Long-Short Ratio since Exp
Future Index Long	73	(9)	(35)	0.8	0.4
Future Index Short	91	13	59		
Option Index Call Long	532	29	142	1.3	0.6
Option Index Call Short	406	28	280		
Option Index Put Long	593	10	114	2.0	1.0
Option Index Put Short	294	6	110		



Cash and carry arbitrage

Underline	Spot Price	Futures Price	Basis	Basis (%)	Action
IDEA	10.95	11.05	0.10	0.9	Buy cash and Sell future
RBLBANK	137.75	138.30	0.55	0.4	Buy cash and Sell future
CHAMBLFERT	440.85	442.50	1.65	0.4	Buy cash and Sell future

Reverse cash and carry arbitrage

Underline	Spot Price	Futures Price	Basis	Basis (%)	Action
INDIAMAR T	5838.30	5688.80	(149.50)	(2.6)	Sell cash and Buy future
VOLTAS	1187.45	1176.25	(11.20)	(0.9)	Sell cash and Buy future
JKCEMENT T	3285.10	3257.55	(27.55)	(0.8)	Sell cash and Buy future

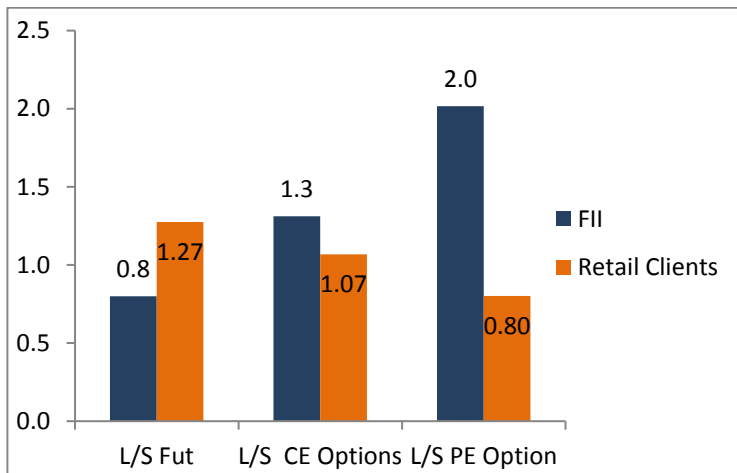
PCR Open Interest

Underline	Current	Previous	% Change
DALBHARAT	1.12	0.67	0.67
SUNTV	0.51	0.36	0.42
ASTRAL	0.30	0.43	(0.30)
BANKNIFTY	0.54	0.75	(0.28)
CHOLAFIN	0.56	0.78	(0.28)
RELIANCE	0.40	0.54	(0.25)
CROMPTON	0.30	0.24	0.25
BAJAJ-AUTO	0.55	0.73	(0.25)
HINDALCO	0.49	0.64	(0.24)
NIFTY	0.67	0.87	(0.24)

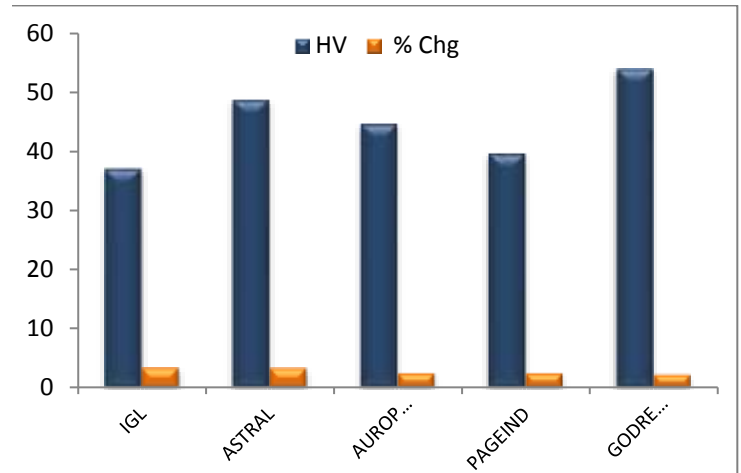
PCR Volume

Underline	Current	Previous	% Change
DALBHARAT	2.28	0.19	11.33
ATUL	0.29	0.07	3.27
GUJGASLTD	0.42	0.11	2.83
HONAUT	0.25	0.08	2.02
PFIZER	0.51	0.17	2.02
RAIN	0.19	0.06	2.00
IPCALAB	0.41	0.14	1.94
INDUSTOWER	0.44	0.16	1.80
BATAINDIA	0.30	0.11	1.66
SUNTV	0.79	0.31	1.54

FII Vs Retail Long-Short ratio



Historical Volatility of Active Stocks



Company	CMP (Rs)	Support*	Resistance*	50-DMA	200-DMA	Company	CMP (Rs)	Support*	Resistance*	50-DMA	200-DMA
AARTIIND	982	962	1014	992	922	CHOLAFIN	643	621	670	569	557
ABBOTINDIA	16336	15966	16851	18606	18245	CIPLA	892	875	902	911	926
ABCAPITAL	115	111	122	119	116	COALINDIA	156	154	160	154	153
ABFRL	285	277	299	280	232	COFORGE	4825	4684	5083	5511	4700
ACC	2167	2137	2209	2276	2198	COLPAL	1404	1384	1439	1456	1601
ADANIEN	1716	1666	1797	1728	1507	CONCOR	623	613	633	636	657
ADANI PORTS	702	686	722	739	739	COROMANDEL	753	738	769	761	806
ALKEM	3501	3429	3574	3509	3431	CROMPTON	413	405	421	436	439
AMARAJABAT	601	592	615	631	715	CUB	139	136	142	144	158
AMBUJACEM	353	344	366	382	375	CUMMINSIND	896	881	920	933	905
APLLTD	756	742	773	793	854	DABUR	546	540	553	579	584
APOLLOHOSP	4498	4403	4652	5116	4227	DALBHARAT	1868	1802	1954	1916	1937
APOLLOTYRE	212	207	221	220	222	DEEPAKNTR	2364	2300	2468	2375	2148
ASHOKLEY	133	129	138	130	127	DELTACORP	267	258	283	275	219
ASIANPAINT	3155	3103	3238	3285	3074	DIVISLAB	4057	3834	4235	4601	4618
ASTRAL	2172	2089	2317	2281	2066	DIXON	4621	4473	4882	5318	4641
ATUL	9287	9102	9577	9057	9026	DLF	372	360	389	397	345
AUBANK	1230	1209	1260	1155	1138	DRREDDY	4364	4287	4466	4670	4933
AUROPHARMA	610	590	642	690	819	EICHERMOT	2656	2609	2717	2590	2632
AXISBANK	705	690	718	698	737	ESCORTS	1856	1837	1874	1843	1430
BAJAJ-AUTO	3382	3337	3441	3335	3752	EXIDEIND	173	170	177	169	178
BAJAJFINSV	15707	15289	16279	17169	14892	FEDERALBNK	92	90	94	90	87
BAJFINANCE	6932	6716	7249	7236	6650	FSL	155	151	161	174	175
BALKRISIND	2359	2307	2435	2289	2272	GAIL	141	138	143	136	146
BALRAMCHIN	399	385	419	359	341	GLENMARK	472	463	485	508	557
BANDHANBNK	308	299	314	279	299	GMRINFRA	40	39	42	43	34
BANKBARODA	93	91	94	89	83	GNFC	448	431	474	437	395
BATAINDIA	1932	1885	2004	1943	1740	GODREJCP	861	846	883	927	929
BEL	197	192	206	208	183	GODREJPROP	1656	1589	1762	1977	1737
BERGEPAIN	713	698	739	761	788	GRANULES	305	298	315	322	332
BHARATFORG	719	706	736	728	734	GRASIM	1691	1653	1760	1731	1582
BHARTIARTL	690	676	705	707	628	GSPL	296	290	308	307	311
BHEL	57	56	59	61	62	GUJGASLTD	692	675	707	661	639
BIOCON	373	367	379	364	374	HAL	1361	1323	1422	1306	1196
BOSCHLTD	16060	15731	16459	16912	15655	HAVELLS	1180	1138	1235	1360	1222
BPCL	373	368	381	388	435	HCLTECH	1125	1102	1156	1209	1107
BRITANNIA	3524	3477	3599	3599	3662	HDFC	2540	2500	2591	2710	2652
BSOFT	451	434	475	508	405	HDFCAMC	2259	2203	2347	2478	2815
CADILAH	397	388	409	456	546	HDFCBANK	1487	1462	1516	1509	1514
CANBK	209	203	216	211	174	HDFCLIFE	628	618	639	669	687
CANFINHOME	573	561	592	592	577	HEROMOTOCO	2706	2659	2761	2533	2768
CHAMBLFERT	441	428	461	405	329	HINDALCO	478	469	494	461	432

Company	CMP (Rs)	Support*	Resistance*	50-DMA	200-DMA	Company	CMP (Rs)	Support*	Resistance*	50-DMA	200-DMA
HINDCOPPER	121	116	128	124	137	MCDOWELL-N	855	835	888	906	749
HINDPETRO	304	298	311	307	287	MCX	1478	1447	1524	1652	1622
HINDUNILVR	2285	2253	2331	2345	2453	METROPOLIS	2536	2475	2635	3176	2855
HONAUT	42215	41518	43387	41172	42074	MFSL	909	889	932	978	996
IBULHSGFIN	209	204	218	229	233	MGL	816	796	844	895	1068
ICICIBANK	798	782	816	760	697	MINDTREE	3889	3779	4059	4576	3499
ICICIGI	1331	1311	1365	1424	1487	MPHASIS	2947	2842	3056	3204	2680
ICICIPRULI	568	557	579	586	606	MRF	71077	69723	72711	74126	78823
IDEA	11	11	12	13	10	MUTHOOTFIN	1442	1413	1464	1498	1457
IDFC	59	57	62	57	54	NAM-INDIA	334	324	351	364	384
IDFCFIRSTB	45	43	46	48	51	NATIONALUM	101	99	106	101	88
IEX	240	233	250	259	186	NAUKRI	4509	4355	4713	5620	5522
IGL	396	383	418	480	515	NAVINFLUOR	3700	3584	3883	3908	3658
INDHOTEL	195	189	205	195	162	NBCC	45	44	47	45	47
INDIACEM	213	205	224	203	191	NESTLEIND	18718	18532	18972	19327	18563
INDIAMART	5838	5647	6102	6906	7481	NMDC	134	131	138	139	157
INDIGO	1992	1946	2064	2029	1872	NTPC	133	131	135	129	122
INDUSINDBK	851	832	870	920	1001	OBEROIRLTY	894	874	922	890	759
INDUSTOWER	249	244	256	268	257	OFSS	3509	3421	3646	4105	4103
INFY	1737	1720	1761	1804	1630	ONGC	166	164	168	150	131
IOC	120	119	122	119	113	PAGEIND	39916	38330	42851	40614	34345
IPCALAB	1043	1022	1062	1041	1095	PEL	2366	2294	2483	2581	2386
IRCTC	810	790	845	851	627	PERSISTENT	4066	3938	4276	4400	3368
ITC	212	209	216	223	217	PETRONET	209	206	213	221	228
JINDALSTEL	377	364	396	385	403	PFC	117	116	120	123	126
JKCEMENT	3285	3211	3390	3422	3181	PFIZER	4591	4529	4699	4966	5371
JSWSTEEL	622	608	647	661	683	PIDILITIND	2640	2597	2703	2450	2257
JUBLFOOD	3501	3417	3642	3704	3545	PIIND	2478	2398	2573	2899	2937
KOTAKBANK	1831	1798	1876	1899	1848	PNB	38	37	39	39	39
L&TFH	73	72	75	79	87	POLYCAB	2463	2390	2523	2442	2084
LALPATHLAB	2871	2795	2973	3562	3468	POWERGRID	214	211	217	205	205
LAURUSLABS	470	460	481	509	569	PVR	1520	1479	1560	1446	1411
LICHSGFIN	338	328	352	379	420	RAIN	215	208	227	220	213
LT	1900	1868	1945	1893	1663	RAMCOCEM	897	877	928	989	1009
LTI	5969	5698	6367	6954	5369	RBLBANK	138	133	145	170	189
LTTS	4558	4416	4759	5419	4046	RECLTD	129	127	133	135	144
LUPIN	922	903	938	912	1027	RELIANCE	2378	2320	2470	2428	2278
M&M	855	842	873	858	814	SAIL	97	95	101	108	118
M&MFIN	150	146	155	159	166	SBICARD	815	793	845	936	1010
MANAPPURAM	149	145	155	169	173	SBILIFE	1225	1207	1242	1186	1105
MARICO	471	466	477	515	516	SBIN	494	486	505	484	442
MARUTI	8052	7892	8272	7622	7229	SHREECEM	24321	23832	25050	26526	27920

Company	CMP (Rs)	Support*	Resistance*	50-DMA	200-DMA
SIEMENS	2231	2165	2327	2323	2142
SRF	2370	2318	2453	2292	1855
SRTRANSFIN	1155	1129	1191	1344	1378
STAR	378	367	395	460	648
SUNPHARMA	801	787	820	797	747
SUNTV	476	466	491	519	522
SYNGENE	581	567	595	603	600
TATACHEM	912	890	948	921	839
TATACOMM	1293	1252	1354	1378	1317
TATACONSUM	691	678	715	754	761
TATAMOTORS	478	466	497	489	378
TATAPOWER	230	223	240	229	161
TATASTEEL	1099	1072	1145	1153	1217
TCS	3771	3724	3834	3680	3471
TECHM	1513	1481	1567	1652	1333
TITAN	2403	2345	2492	2440	2011
TORNTPHARM	3118	3067	3172	3074	2950
TORNTPOWER	537	528	550	557	488
TRENT	1122	1076	1184	1077	958
TVSMOTOR	612	603	626	658	608
UBL	1524	1498	1560	1580	1471
ULTRACEMCO	7156	7041	7318	7490	7239
UPL	763	750	781	754	750
VEDL	312	306	322	339	298
VOLTAS	1187	1165	1205	1226	1116
WHIRLPOOL	1799	1762	1837	1924	2126
WIPRO	573	559	596	661	603
ZEEL	268	257	285	331	253

Bulk Deals					
Date	Script name	Institution	B/S	Qty ('000)	Avg price (₹)
24-Jan	ANTGRAPHC	ROHIT KUTHARI	S	1900	2.8
24-Jan	RATEGA IN	KUBER INDIA FUND	B	750	397.8

Result Today: Maruti Suzuki India, Cipla Allsec Technologies, APL Apollo Tubes, Astec Lifesciences, Best Agrolife, Burnpur Cement, Can Fin Homes, CarTrade Tech, Cosmo Films, Deccan Cements, Emkay Global Financial Services, Federal Bank, Finolex Industries, Indiabulls Real Estate, ICRA, Macrotech Developers, Max India, Pidilite Industries, Raymond, RPG Life Sciences, Skipper, Snowman Logistics, SRF, Star Cement, Sundaram Multi Pap, Swaraj Engines, Symphony, TeamLease Services, Torrent Pharmaceuticals, United Spirits, and Uttam Galva Steels.

Corporate Snippets:

- ✧ Maruti Suzuki will shortly commence work on its new manufacturing facility in Sonipat, Haryana and it could emerge as the largest production base for Maruti in India.
- ✧ Vodafone Idea (Vi) has downplayed concerns around its 4G slowing subscriber growth with Managing Director Ravinder Takkar pinning it down to SIM consolidation and tariff hikes, which had led to some of the subscriber exits.
- ✧ Burger King India narrowed loss to Rs 15.15 crore in Q3FY22 against loss of Rs 29 crore in Q3FY21; revenue jumped to Rs 279.89 crore from Rs 163.19 crore YoY.
- ✧ Axis Bank reported a sharp rise in profit at Rs 3,614 crore in Q3FY22 against Rs 1,116.6 crore in Q3FY21. Revenue rose to Rs 8,653.4 crore from Rs 7,372.8 crore YoY.
- ✧ Craftsman Automation reported lower profit at Rs 37.6 crore in Q3FY22 against Rs 43.4 crore in Q3FY21, revenue increased to Rs 554.1 crore from Rs 489 crore YoY.
- ✧ Sudarshan Chemical Industries reported lower profit at Rs 36.38 crore in Q3FY22 against Rs 39.16 crore in Q3FY21, revenue jumped to Rs 601.75 crore from Rs 506.37 crore YoY.
- ✧ Indian Energy Exchange reported higher profit at Rs 80.73 crore in Q3FY22 against Rs 58.14 crore in Q3FY21, revenue rose to Rs 117.54 crore from Rs 85.23 crore YoY.
- ✧ Ramco Cements reported lower profit at Rs 82.6 crore in Q3FY22 against Rs 201.4 crore in Q3FY21, revenue rose to Rs 1,549 crore from Rs 1,339 crore YoY.
- ✧ Deepak Nitrite reported higher profit at Rs 242.46 crore in Q3FY22 against Rs 216.56 crore in Q3FY21, revenue jumped to Rs 1,722.27 crore from Rs 1,234.69 crore YoY.

Economy Snippets:

- ✧ CCI looks to ease market share disclosure norms for mergers
- ✧ India's fuel demand recovery to continue, says Fitch Ratings
- ✧ Third wave drags business resumption to pre-Covid levels

Sunday	Monday	Tuesday	Wednesday	Thursday	Friday	Saturday
						1-Jan
2-Jan	3-Jan	4-Jan	5-Jan	6-Jan	7-Jan	8-Jan
	Nikkei Markit Manufacturing PMI (Dec), Trade Balance INR, ISM Manufacturing New Orders Index (Dec) USD, Manufacturing PMI (Dec) JPY, Caixin Manufacturing PMI (Dec) CNY	ISM Manufacturing Employment (Dec) USD	Nikkei Services PMI (Dec) INR, Markit Composite PMI (Dec) USD, Caixin Services PMI (Dec) CNY	Factory Orders (MoM) (Nov) USD, CPI Tokyo Ex Food and Energy (MoM) (Dec) JPY	FX Reserves (USD) (Dec) CNY, Private Nonfarm Payrolls (Dec) USD	
9-Jan	10-Jan	11-Jan	12-Jan	13-Jan	14-Jan	15-Jan
	Wholesale Trade Sales (MoM) (Nov) USD	CPI (YoY) (Dec) CNY	Economy Watchers Current Index (Dec) JPY, Industrial Production (YoY) (Nov), Cumulative Industrial Production (Nov) INR, Federal Budget Balance (Dec) USD	France Thomson Reuters IPSOS PCSI (Jan) EUR, China Thomson Reuters IPSOS PCSI (Jan) CNY	WPI Inflation (YoY) (Dec) INR, Export Price Index (MoM) (Dec), Michigan Consumer Expectations (Jan) USD	
16-Jan	17-Jan	18-Jan	19-Jan	20-Jan	21-Jan	22-Jan
		Average Earnings ex Bonus (Nov) GBP, World Economic Forum Annual Meetings CHF, OPEC Monthly Report USD	World Economic Forum Annual Meetings CHF, IEA Monthly Report USD, BoE MPC Member Cunliffe Speaks GBP	ECB Publishes Account of Monetary Policy Meeting EUR, Initial Jobless Claims USD, Philly Fed Business Conditions (Jan) USD, Monetary Policy Meeting Minutes JPY	Bank Loan Growth INR, ECB President Lagarde Speaks EUR, U.S. Baker Hughes Oil Rig Count USD,	
23-Jan	24-Jan	25-Jan	26-Jan	27-Jan	28-Jan	29-Jan
	Manufacturing PMI (Jan) USD	Richmond Manufacturing Shipments (Jan) USD	BoC Monetary Policy Report CAD, Fed Interest Rate Decision USD, Chinese Industrial profit YTD (Dec) CNY	GDP Sales (Q4) USD	Michigan Inflation Expectations (Jan) USD	
30-Jan	31-Jan					
Industrial Production (MoM) (Dec) JPY, Chinese Composite PMI (Jan) CNY	Federal Fiscal Deficit (Dec), Infrastructure Output (YoY) (Dec) INR					

Recommendation Parameters for Fundamental/Technical Reports:

Buy – Absolute return of over +10%

Accumulate – Absolute return between 0% to +10%

Reduce – Absolute return between 0% to -10%

Sell – Absolute return below -10%

IIFL Group | IIFL Securities Ltd (CIN No.: L99999MH1996PLC132983) Office No 1, Gr Floor, Hubtown Solaris, NS Phadke Marg, Andheri, Vijay Nagar, Mumbai - 400069. Tel.: (91-22) 2580 6650 *Customer Service: 40071000 *Stock Broker SEBI Regn: INZ000164132 *NSE: 10975 *BSE: 0179 *MCX:55995 *NCDEX:378 *Depository: INDP185 2016 *MF Distributor ARN: 47791, *PMS SEBI Regn.: INP000002213, *Investment Adviser SEBI Regn. : INA000000623, *Research Analyst SEBI Regn:- INH000000248 | Kindly refer to www.indiainfoline.com for detailed disclaimer and risk factors.

For Research related queries, write at research@iifl.com

For Sales and Account related information, write to customer care: cs@iifl.com or call on 91-22 4007 1000